

2017年首届 国际工程师资质认证 培训班

Professional Registration in China



Colin Sellers, Manager, Registration & Standards
Dick Bacon, Manager Professional Development

Getting Registered

What this presentation will cover:

- What is the IET and why should I join?
- What is Professional Registration?
- What does it mean to you?
- What are the categories of Professional Registration?
- What is Underpinning Knowledge and Understanding (UK&U)?
- What is Competence and how is it demonstrated and assessed?
- How do you make an application?

Working to
engineer
a better world



The IET

- A professional body for engineers, technicians and those involved in engineering
- > 169,000 members in 150 countries
- Broad based engineering coverage spanning 5 Sectors
 - Built Environment, Design & Production, Energy, Information & Communications, Transport
- Has a history going back to 1871 and is regulated by Royal Charter
- Members span all technical roles from factory floor to Chief Executive
- The IET is the largest of the 35 professional bodies licensed by the Engineering Council of the UK

IET Role

- Sets or applies standards to regulate membership and professional registration
- Accredits degree courses and industry development schemes
- Provides independent advice to government
- Provides a comprehensive educational support programme
- Provides award recognition of key contributors
- Provides wide range of services and support to engineers & technicians throughout their

Benefits of IET Membership:



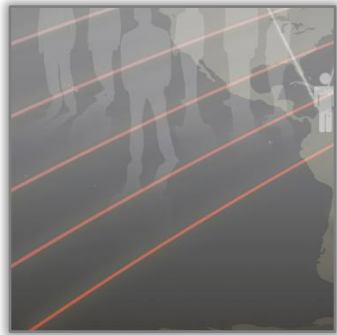
Knowledge Resources



IET VISION



Working
to engineer
a better world

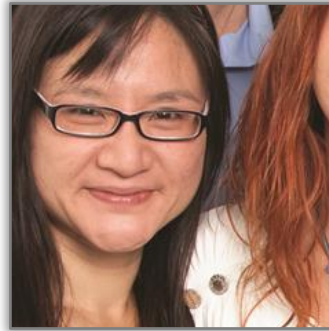


IET MISSION

To **inspire, inform and influence** the global engineering community, supporting technology innovation to meet the needs of society.

IET VALUES

We treat everyone with **integrity** and respect, continually striving for **excellence** in all our activities and use the power of **teamwork** to deliver value.



INSPIRE INFORM INFLUENCE

What is Professional Registration?

- International recognition of your Competence and Commitment
- Helps ensure the safeguarding of society
- Gives employers, government and society confidence in engineering



What is Professional Registration

- UK-SPEC, the Registration process and Career Manager

What does Professional Registration mean to you?

- Improved career prospects and employability
- Higher earning potential
- Professional attitude
- Enhanced status
- International Recognition including on International Projects
- Greater Influence



Benefits of Professional Registration

- Recognition as a professional in your field;
- Improved self motivation, career opportunities and salary prospects;
- Greater influence within your organisation and industry;
- Confirmation that you are a competent engineer and/or technology professional;
- Connecting you with innovative, influential and inspirational people;
- International recognition of your qualifications



What does Professional Registration mean to business?

- Technical/managerial credibility
- Assurance of competence
- Confirmation of skills claimed
- International recognition
- Recruitment and retention
- Enhanced organisational reputation
- Quality Management System

Your Journey to Professional Registration

- The Engineering Council UK video



Becoming Professionally Registered.mp4

Professional Registration Categories

2 relevant categories of Professional Registration

CEng

IEng

The UK Standard for Professional Engineering Competence (UK-SPEC)

The China Standard for Professional Engineering Competence (China-SPEC)



Which Registration Category should you choose?

Incorporated Engineer (IEng)	Chartered Engineer (CEng)
<ul style="list-style-type: none">• Maintain/manage applications of current/developing technology• Apply existing/emerging technology• Problem solve• Involved in design/development/manufacture/construction/operation• Contribute to continuous improvement• Manage planning/budgeting & organisation of tasks/people & resources	<ul style="list-style-type: none">• Pioneers technology/engineering services/management methods• Develop new/existing technology• Design responsibility for complex systems and/or high risk areas• Problem solve• Make a key contribution to your business's success, through innovation/creativity/change• Develop better production techniques/marketing & construction concepts• Promote advanced designs/design methods• Lead planning/budgeting & organisation of tasks/people & resources

Break

Underpinning Knowledge and Understanding

Competence

Underpinning Knowledge and Understanding

Exemplifying Qualifications:

- CEng: accredited BEng(Hons) + MSc/FL or accredited MEng degree
- IEng: accredited Bachelor degree or HND/Foundation Degree + FL
- See [CEEAA](#) for accredited courses in China (CEng level)

Do not hold exemplifying qualifications?

Washington Accord

CEng

Sydney Accord

IEng

Do not hold Exemplifying Qualifications?

- Recognised Chinese (or other) equivalent qualification(s)
- Other relevant qualifications
- Work-based or other experiential learning
- Technical Report

Initial Professional Development:

Reviewing

- Action Plan
- Achievements
- Honest reflection

Planning

- Goals
- Prioritise
- Set Objectives

The Professional Development Cycle

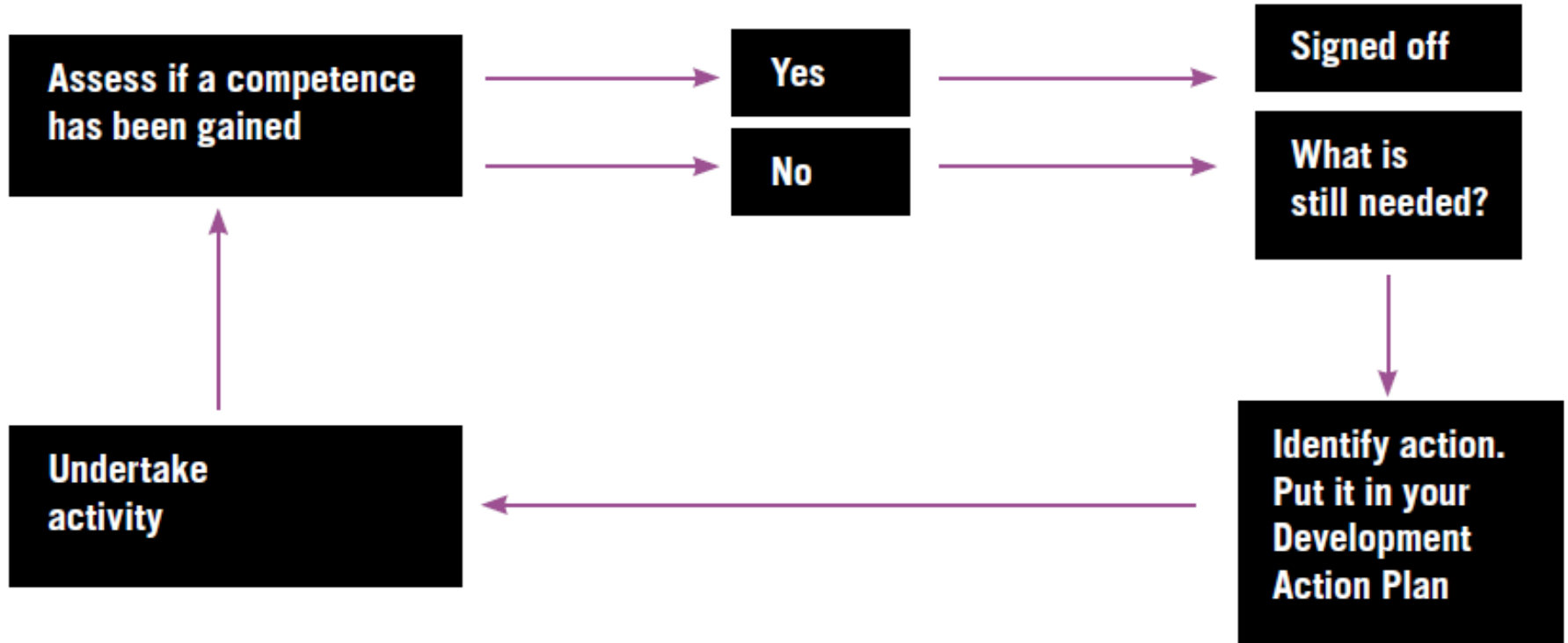
Recording

- Keep a record
- Link to competence
- Reflection

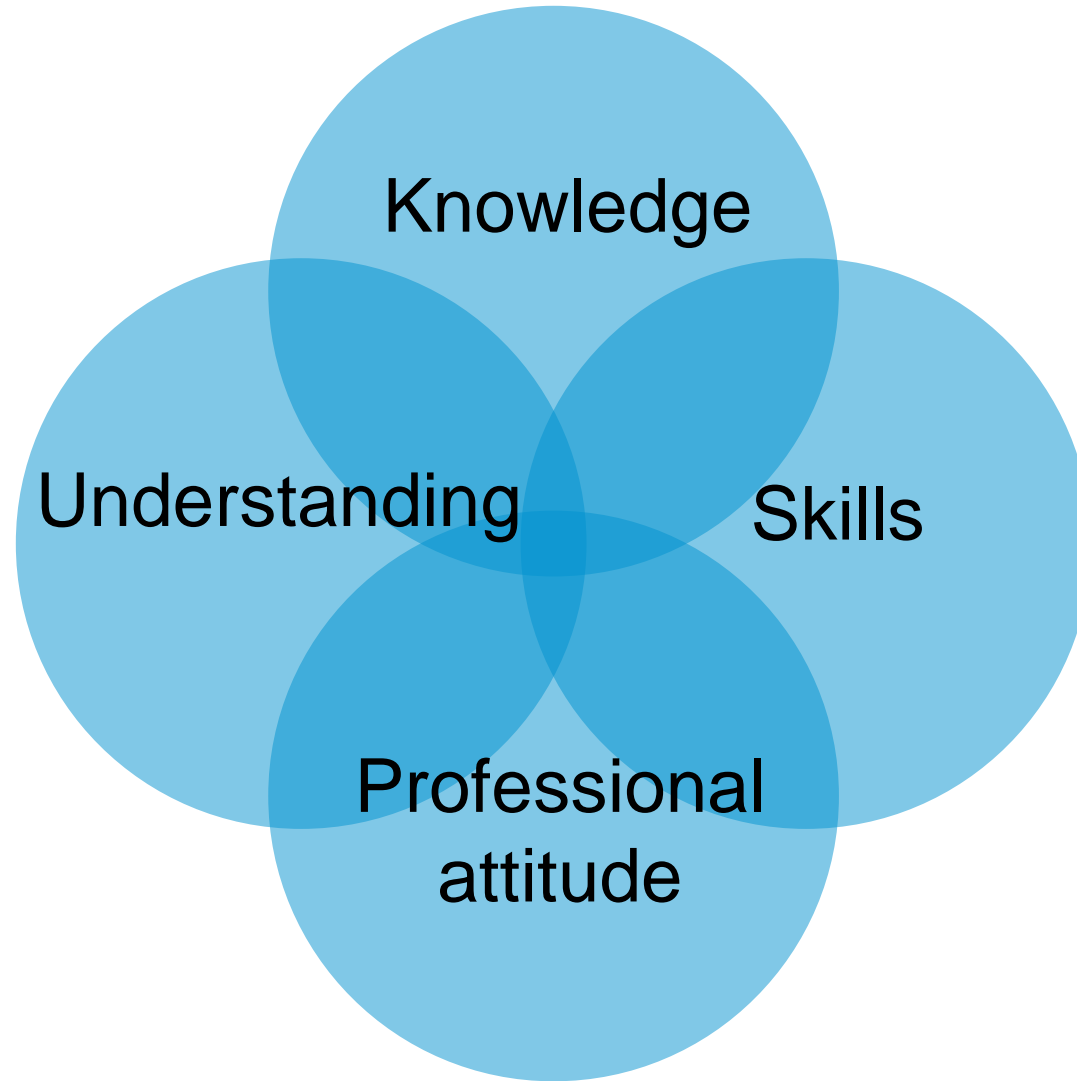
Doing

- Action Plan
- Work Method
- Make time
- Get support

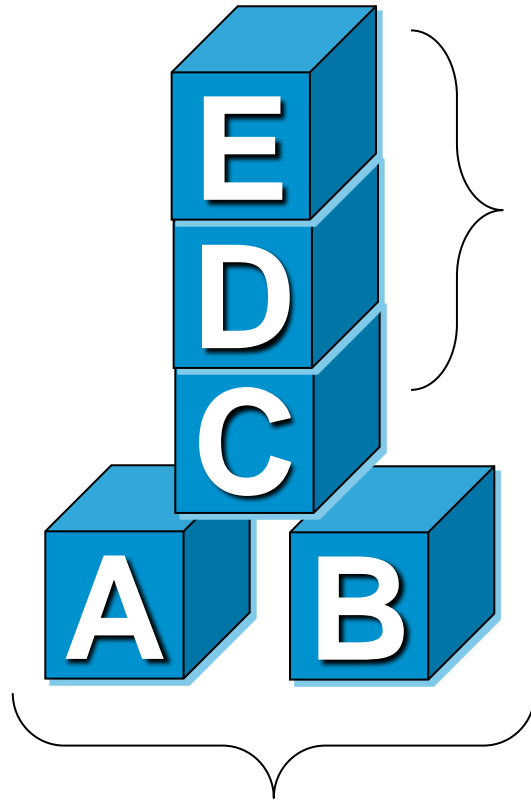
Initial Professional Development: a structured example



What is Competence?



Defining Competence:



Common
Skills/Approach

A - Knowledge and understanding

B - Design and development of processes, systems, services and products

C - Responsibility, management / leadership

D - Communication and interpersonal skills

E - Professional commitment

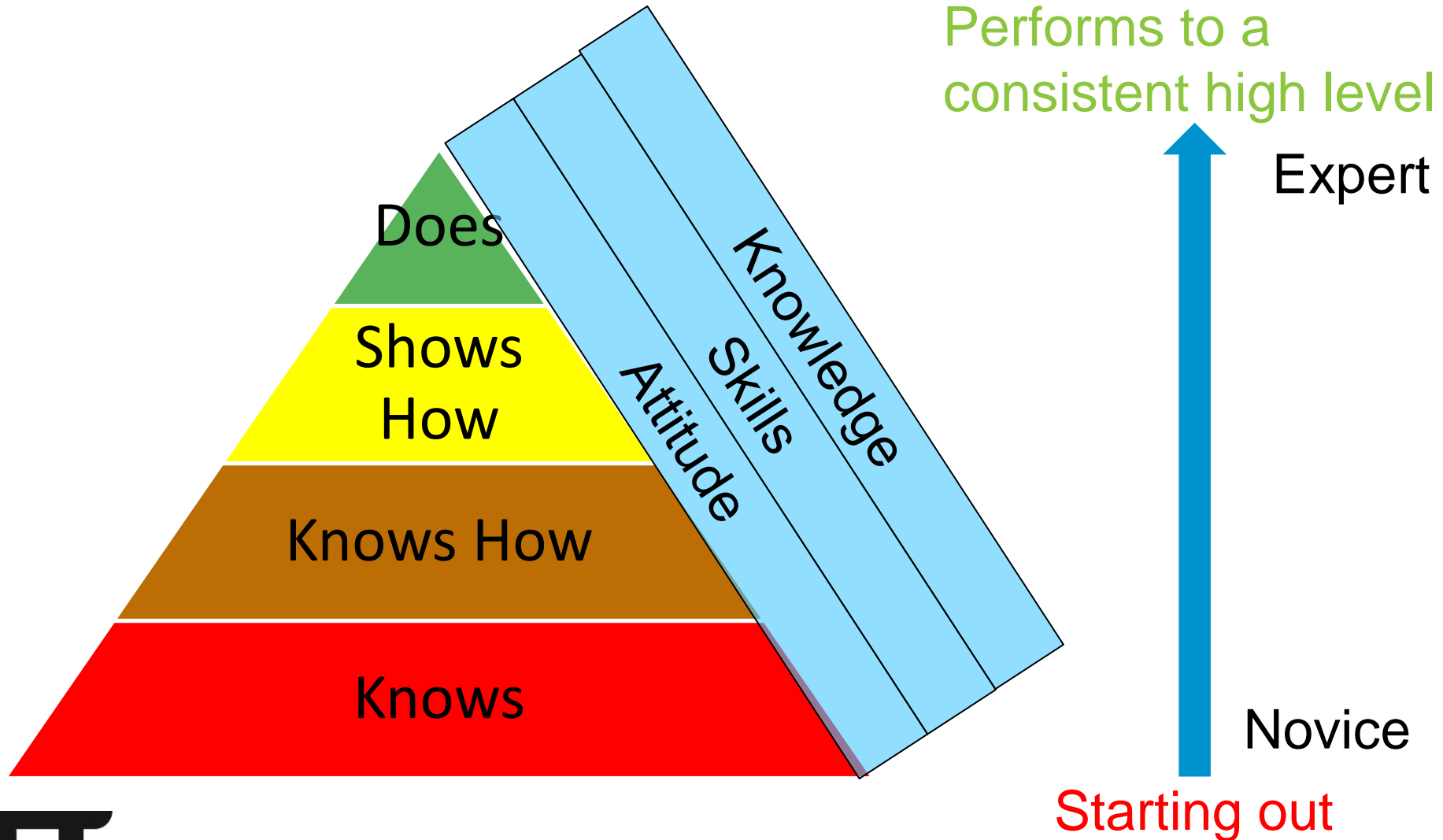
Engineering and Technology

Discipline Specific

Competences explained

- A&B
 - Technical Competence
- C&D
 - Managerial, organisation and employability/communication skills
- E (Commitment and Competence)
 - Professional approach to your work

Developing and Assessing Competence



Break

- Lunch

How is Competence Assessed?

- Not a formal question-based examination
 - Not “What is the Norton Equivalent circuit for.....”
- Assessment is based on situations you have faced, not theoretical situations
- Requires candidates to answer
 - Tell me how you solved....
 - Tell me how you have designed...
 - Tell me about the projects have you led...

How is Competence Assessed?

- A review of your written evidence, plus supporting documentation
- A face-to-face interview



Commitment explained

- Codes/Rules of Conduct
 - Professional and industry-specific
- Safety and Safe systems of work
- Sustainable Development
 - Environmental impact, etc..
- Continuing Professional Development
 - Competence maintenance and development
- Ethical practices

How to make an application

- Be familiar with UK-SPEC/China-SPEC
- Record evidence of how you demonstrated competence and commitment during, for example, any Initial Professional Development you have undertaken
- Self-assess your evidence against the competence and commitment requirements
- Show how you plan for and address Continuing Professional Development (CPD)

Get Guidance from an advisor

Applying for Professional Registration

1. Overview 2. Registration Checklist 3. Your Expertise 4. Validate / Verify 5. Submit Application

2. Professional Registration Checklist - Chartered Engineer

Before submitting your application you should have completed the mandatory items listed below. Items marked optional should also be completed where applicable.

In particular, it is important that you include detailed descriptions of your career responsibilities and achievements, giving specific examples of your work. We strongly advise you to read the [guidance notes](#) for your desired category of registration before you complete or submit your application. If you submit your application before you can submit it to the IET again.

[Preview Draft Prof...](#)

The Institution of Engineering and Technology
CEng Professional Registration
DRAFT Application Form

Personal Information					
Title	Mr	First Name	Career Manager	Family Name	Demo 2
Post Nominals	MET		Date of Birth	01/01/1970	
Gender	Male				
Home Address	The Institution of Engineering Technology Michael Faraday House STEVENAGE				
County/State	Hertfordshire	Country	United Kingdom		
Postcode	SG1 2AY	Home Phone	Mobile		
Email	CMV3@iet.org				

Membership Details	
Membership Number	70743472
Membership Type	Member (MET)

Current Employment				
Employer	Employer Name	Job Title	Job Title	
Business Address	Michael Faraday House Six Hills Way Stevenage			
County/State	Hertfordshire	Country	United Kingdom	
Postcode	SG1 2AY	Work Phone		
Which Address would you like all correspondence to be sent to?	Home			

Education					
Establishment Name	Qualification/Course	Classification	Course Type	Dates	
University Name	BEng	BEng in Engineering	2:1	Full Time	Start: 01 Sep 2009 End: 30 Jun 2012
University Name	MSc	MSc in Engineering	2:1	Part Time	Start: 03 Sep 2012 End: 30 Jun 2013

Schemes			
Scheme No.	Organisation	Acceptance Date	Dates
9999	The IET	24 Oct 2014	Start: 01 Oct 2014 End: 13 Nov 2014
9999	The IET	15 Oct 2014	Start: 01 Sep 2014 End: 20 Oct 2014

Achievements		
Title	Publisher	Date
Title of publication/presentation	Location/Publisher	01 Sep 2014

Your Expertise			
Specialism 1	Date of Advice		
Specialism 3			

used to carry out an initial assessment of your application. As a result of this initial information to support your application.

- Fill out the professional registration checklist
- Focus on your career history
- Use the guidance notes available
- 1st Person, strong action verbs
- No more than 12 pages
- Include an Organisation Chart
- Preview your application at any time or to send a copy to an advisor for feedback

Applying for Professional Registration

The screenshot displays the IET Career Manager interface. On the left, a sidebar shows the 'Assessment Verification' section with a 'Verify' button. The main content area is titled 'Supporter Reference Form' and contains two sections for verification:

- A - Knowledge and Understanding of Engineering or Technology Principles**
Use a combination of general and specialist engineering knowledge and understanding to optimise the application of existing and emerging technology
- B - Practical Application of Engineering or Technology Skills**
Apply appropriate theoretical and practical methods to the analysis and solution of engineering problems

Each section includes a large text input area and a dropdown menu labeled 'Please select...' with the question 'Has the candidate demonstrated against the statement?' below it. The interface also features a 'Close' button in the top right corner of the form window.

- Have your application verified online by your supporters
- Then submit your application to the IET

Completing the Application Form

- We will use my application as an example
- This is completed using the IET's Career Manager online tool
- [Let's go!](#)



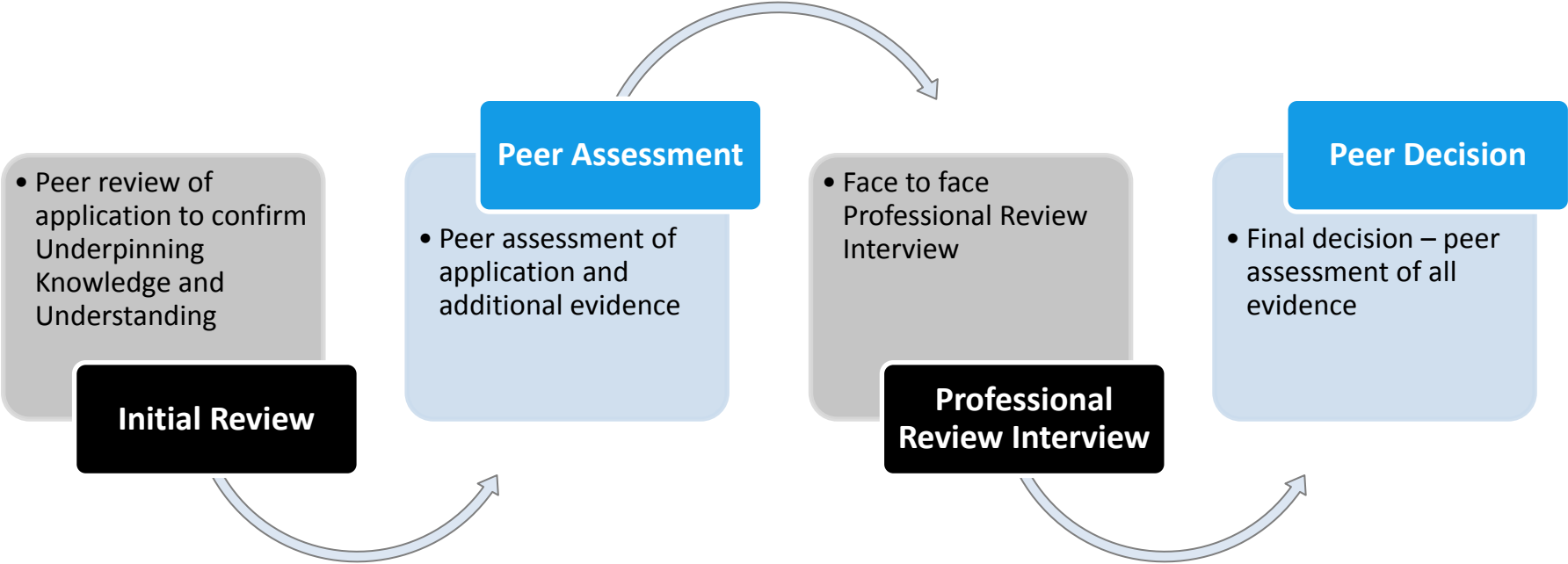
Submitting your application form

- Once you have completed the application and the application checklist is all complete
- Share your application with your supporter(s) for their verification
 - Who can be a supporter?
 - Someone who has known you professionally for at least 2 years, and can verify your work/projects you have worked on, e.g. your line manager, college supervisor, etc.
- Upon receipt of supporter verification
- Submit your application

Break

- 2 hours after lunch

IET Professional Review Process Overview



The Professional Review Interview

What should I expect?

Mandatory for IEng and CEng

Lasts around 45 – 60 minutes (includes 15 minute presentation)

Conducted by 2 interviewers

Is based on your application form

The Interview is

- A demonstration of competence
- Testing verbal communication
- NOT a technical examination

Professional Review Interview

Re-read your application form

You will give a 15 minute presentation on a project of your choice

How should I prepare?

Stay active in the profession and/or the IET

Take relevant props and your Development Action Plan(s) for your CPD

Remember – Code of Conduct, risk, sustainability and ethics will be covered

Final Peer Decision

Accept

Decline/
Re-Apply

Decline

Appeal



Questions?

End